

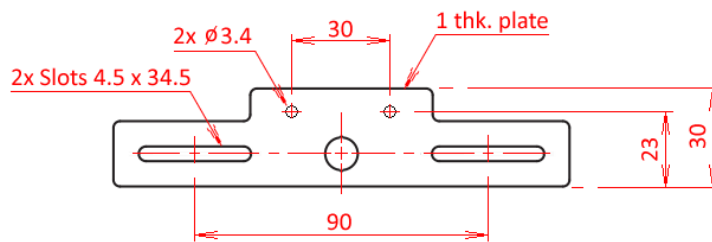
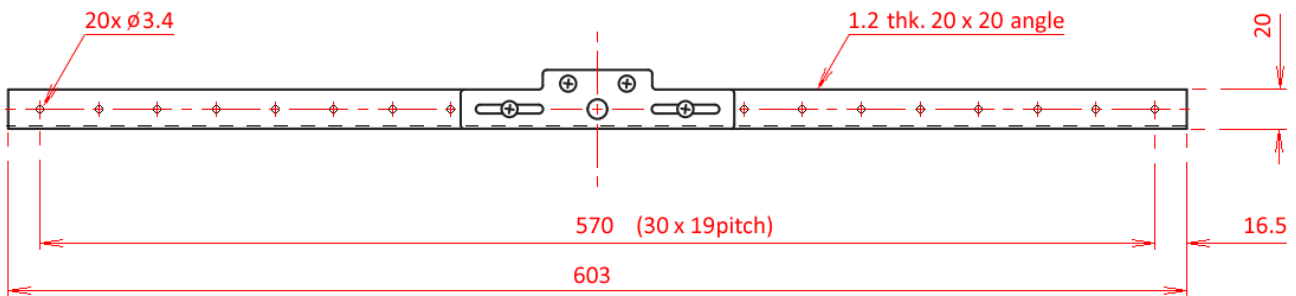
76-568 TOA HY-TB1 TILE BAR BRIDGE



The HY-TB1 is a channel bar to be used when supporting flush-mounted ceiling speakers by way of ceiling bars to prevent their full weight from being directly applied to the ceiling panel during installation. This channel bar is used in conjunction with reinforcement hardware supplied with the speaker. One complete set consists of 2 HY-TB1 bars.

Long support frame (set of 2 rails) designed to provide secure support for flush-mounted ceiling speakers while preventing the speaker's weight from being directly applied to the ceiling panels.

Finish: Steel plate, plating
 Weight: 500 g (2 pieces)



Tie Plate Detail

All dims mm
 Not To Scale