



### Sennheiser Documentation App



or online at  
[www.sennheiser.com/download](http://www.sennheiser.com/download)  
 evolution wired\_



# e 914

Quick Guide  
 Kurzanleitung  
 Guide rapide  
 Guida rapida  
 Guía de inicio rápido  
 Guia rápido  
 Beknopte handleiding  
 Krótka instrukcja obsługi  
 Snabbguide

Kvikstartguide  
 Pikaohje  
 Γρήγορος οδηγός  
 Kısa Kılavuz  
 Краткая инструкция  
 快速指南  
 快速使用指南  
 クイックガイド  
 퀵 가이드

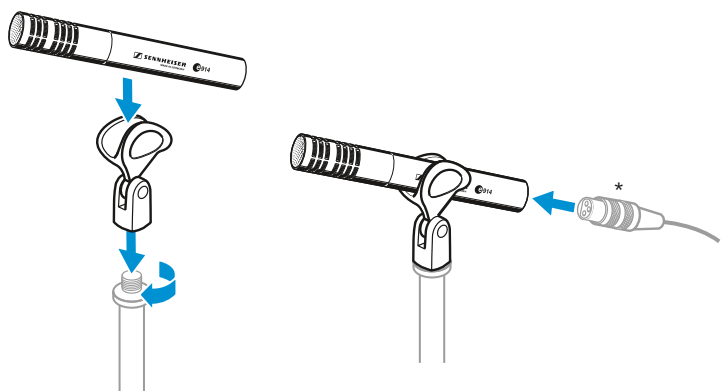
Sennheiser electronic GmbH & Co. KG

Am Labor 1, 30900 Wedemark, Germany  
[www.sennheiser.com](http://www.sennheiser.com)

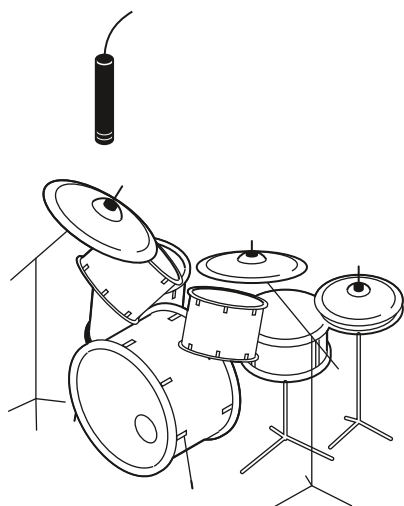
Printed in Germany  
 Publ. 07/21, 581337/A03

## SENNHEISER

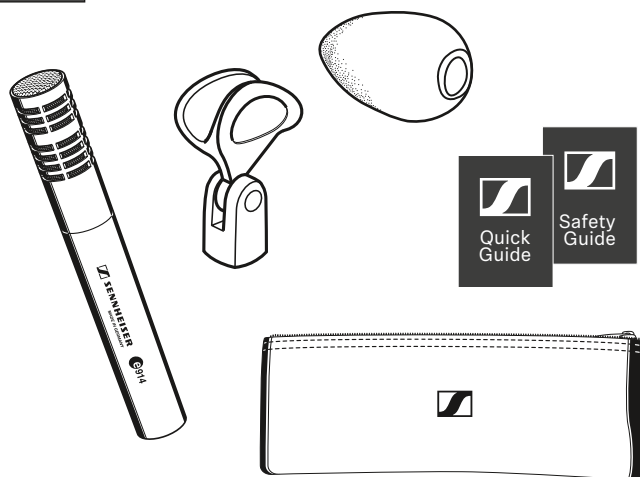
### Setup



\*XLR-3 cable not included

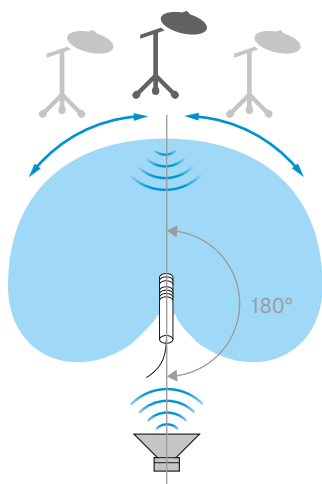
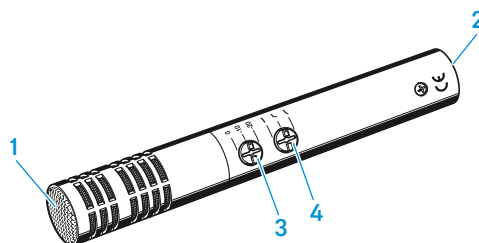


### In the box

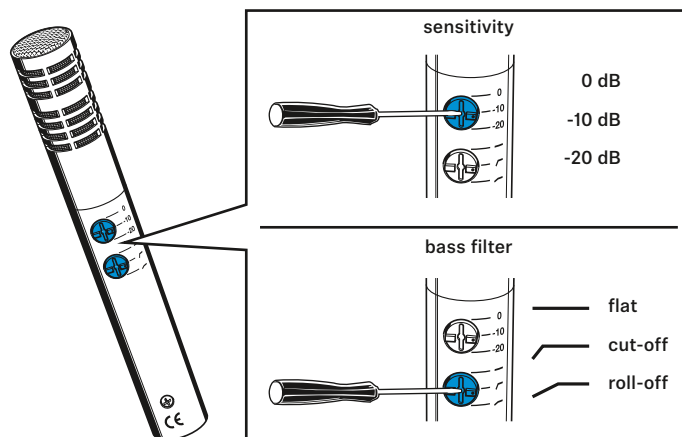


### Overview

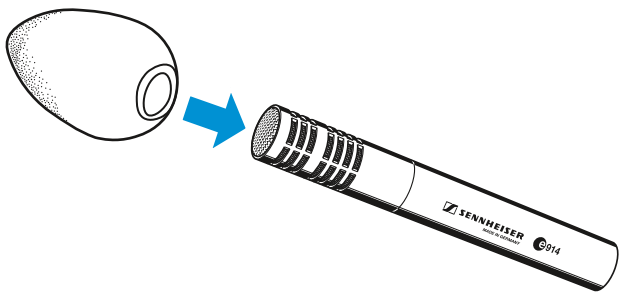
- 1 Sound inlet basket
- 2 XLR-3 connector
- 3 Adjusting
- 4 Adjusting the bass filter



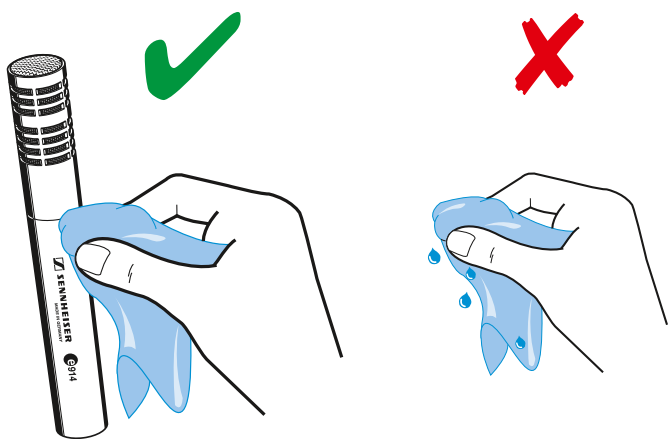
### Adjusting



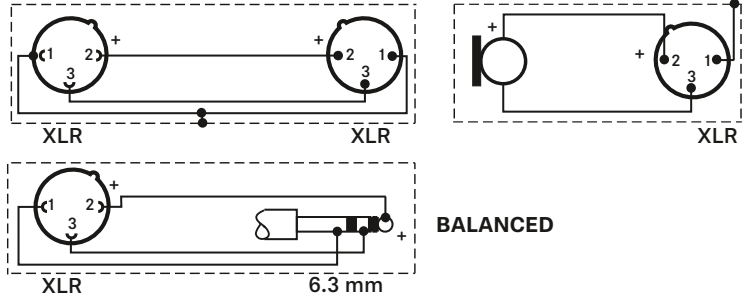
### Using the windshield



### Cleaning



### Connector assignment



### Specifications

Transducer principle	pre-polarized condenser microphone
Frequency response	20 - 20,000 Hz
Pick-up pattern	cardioid
Sensitivity (free field, at 1 kHz)	7 mV/Pa
with pre-attenuation	2.3 mV/Pa / 0.7 mV/Pa
Nominal impedance (at 1 kHz)	100 Ω
Min. terminating impedance	1 kΩ
Max. sound pressure level (at 1 kHz)	137/147/157 dB SPL (depending on pre-attenuation)
Equivalent noise level	
A-weighted	24 dB
CCIR-weighted	34 dB
Pre-attenuation	0 dB, -10 dB, -20 dB

Bass filter	linear roll-off 130 Hz, 6 dB/oct. cut-off 85 Hz, 18 dB/oct.
Phantom powering	48 V / 2.2 mA
Connector	XLR-3
Dimensions	∅ 24 x 157 mm
Weight	198 g

### Polar pattern and frequency response

