



ASSEMBLY INSTRUCTION

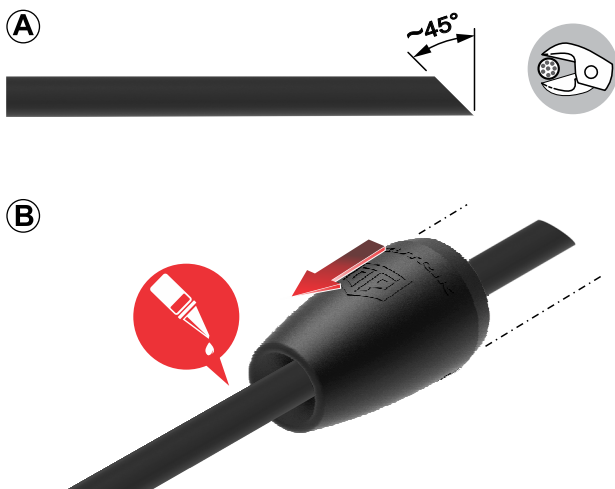
NC3MX1-TOP & NC5MX1-TOP | XLR Cable Connector



IP65 RATED AND TOP-APPROVED.



1 CABLE & BOOT ASSEMBLY



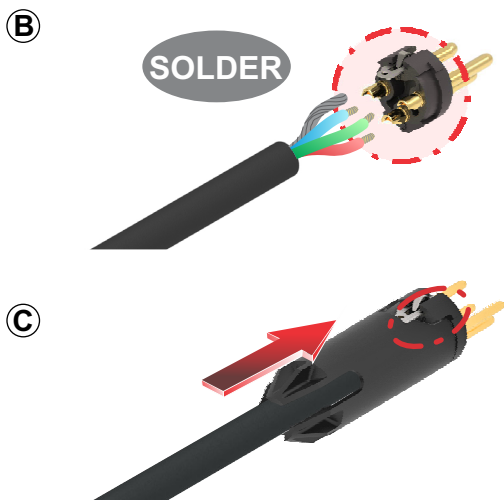
- Ⓐ Cut cable end approx. 45°.
- Ⓑ Slide the bushing over the cable.

To ease the boot assembly, apply some cable pulling lubricant to the cable ends.

2 ASSEMBLE INSERT AND CONNECTOR

Ⓐ Cable O.D.: 5.0 - 8.0 mm [0.19 - 0.32"]

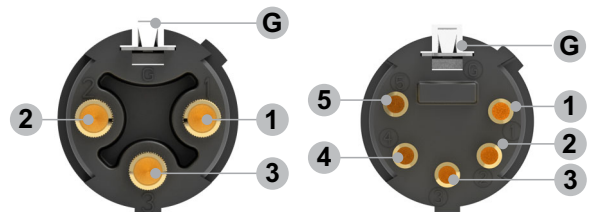
Ⓐ Prepare cable as shown.



Ⓑ Insert wires into the terminals and solder them.

Wiring: 3 pole

5 pole

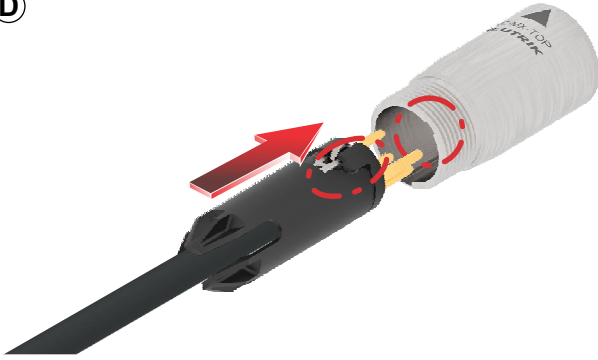


Ⓒ Put chuck onto the cable.

Pay attention to the guiding key.



D



D Slide insert and chuck together into the housing.

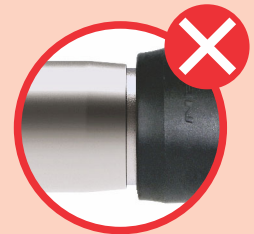
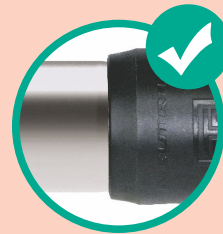
Important:
Align the insert by positioning as shown.

E



E Finish the installation by turning the bushing onto the connector.

Attention:
Screw the bushing to the end of the thread.



FINISHED XLR TOP



FINISHED XLR CONNECTOR



More Information on the website

<https://www.neutrik.com/en/products/audio/xlr>



Draft. Nr.: BDA 689 V1
Update: 2023-03-27

Neutrik AG | LI-9494 Schaan
www.neutrik.com

Data subject to change without prior notice. © 2023 NEUTRIK®. NEUTRIK® are registered trademark of Neutrik AG. ALL RIGHTS RESERVED.