

Signature Series

Maximum Resilience Broadcast Audio



PS1 6 Output Power Station



Overview

The signature PS1 power station provides the option of adding a fully resilient back up power supply to your signature series products. It contains two power supplies each capable of running up to 3 separate signature series units.

As well as providing a backup DC supply to your signature series units the supply can act as a master DC supply to the signature series.

For ease of installation and allowing quick connectivity to other signature series products every signature PS1 is shipped with 6 off 4 pin XLR DC cables which are each 2 metres long.

All outputs are individually fused so a short circuit on one will not affect any of the others.

Power is provided by a pair of internal wide input range switch mode power supplies. A pair of bright front panel LEDs indicate that each power supply is on and working.

Applications

- Backup DC power supply to signature series units already connected to AC mains
- Master DC power supply to signature series units not connected to AC mains
- General purpose +/-12V power supply

PS1 Information

GlenSound
6 Brooks Place
Maidstone, Kent
UK, ME9 8QU
Tel: +44 (0)1622 753 662
Web: www.glenSound.co.uk
Email: sales@glenSound.co.uk

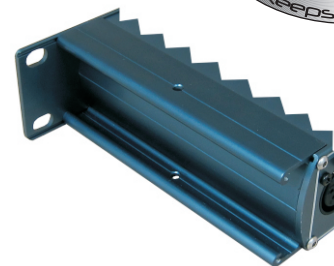




SIGNATURE SERIES STANDARD FEATURES



- Includes 19" rack mount ears as standard. Every unit can rack mount in a 1U 19" rack.
- Rack ears can be fitted to front **OR** rear of unit for truly flexible installation



- Internal switch mode AC power supply, with +/- 12V DC input for main or backup power, via Signature PS1 Power Station

- Side wings for fixing onto flat services or inside racks.
- Wings have mounting holes in top and bottom allowing fixing from ontop **OR** underneath.

PS1 SPECIFICATION

POWER

Mains Input
 Filtered IEC, 100 to 240VAC
 47 - 63Hz

AC Consumption
 10 Watts @ 230VAC

DC Output
 6 off 4 Pin Neutrik XLR plug +/- 12V

DC Output Fuse
 Internal polyfuse 250mA per rail per output

Internal Mains Fuse
 20mm 1A Anti Surge

PHYSICAL

Size
 336 x 123 x 44mm (LxDxH) no rack ears
 482mm (19") 1RU with rack ears

Weight
 0.85kg

Mechanics
 All aluminium construction, anodized and laser etched

Shipping Carton
 Rugged export quality cardboard carton
 610 x 420 x 130mm (LxDxH)

Shipping Weight
 3kg

ACCESSORIES

DC Output Cable
 6 off 2 metre long cables 4 pin XLR plug to 4 pin XLR socket included

PS1 Information

GlenSound
 6 Brooks Place
 Maidstone, Kent
 UK, ME9 8QU
Tel: +44 (0)1622 753 662
Web: www.glenSound.co.uk
Email: sales@glenSound.co.uk

